

Y-Type Globe



Up-right Globe Type



◎ Product installation, please refer to the installation of the 25page recommendations.

Surge Anticipator & Pressure Relief Valve (Model 133-040)

Special Features

- Sensitive and Accurate Pressure Control.
- Fast opening to maintain Line pressure.
- Slow Closing to prevent Surge.
- Ability to anticipate high pressure wae.

Model 133-040 consists of Robocon Valve (BALEM 130), Pressure Relief Pilot Valve and Pressure Reducing Pilot Valve. The valve is installed at Bypass line for protecting pumps and pipe-line systems from dangerous surges caused by rapid changes of flow velocity within a pipeline.

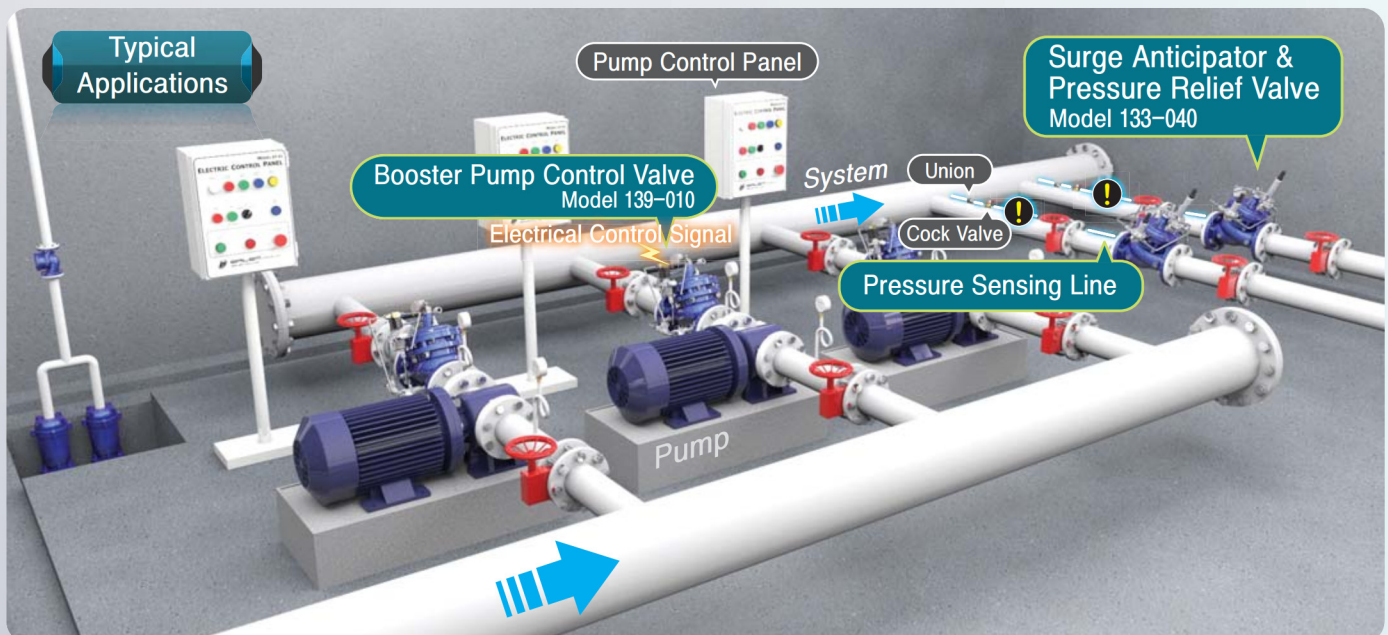
The valve has anticipated the down pressure caused by the abrupt stopping of the pump and opening, closing of valve, immediately opens to prevent high pressure in pipeline and has to minimize high pressure, relieves excessive setting pressure.

Patents • Patented to Korea.

Description	Item
BALEM 130 (Robocon Valve)	1
Pressure Relief Pilot Valve	1
Pressure Reducing Pilot Valve	1
Hytrol Valve	1
Needle & Strainer	1
Cock Valve	2
Pressure Gauge	1

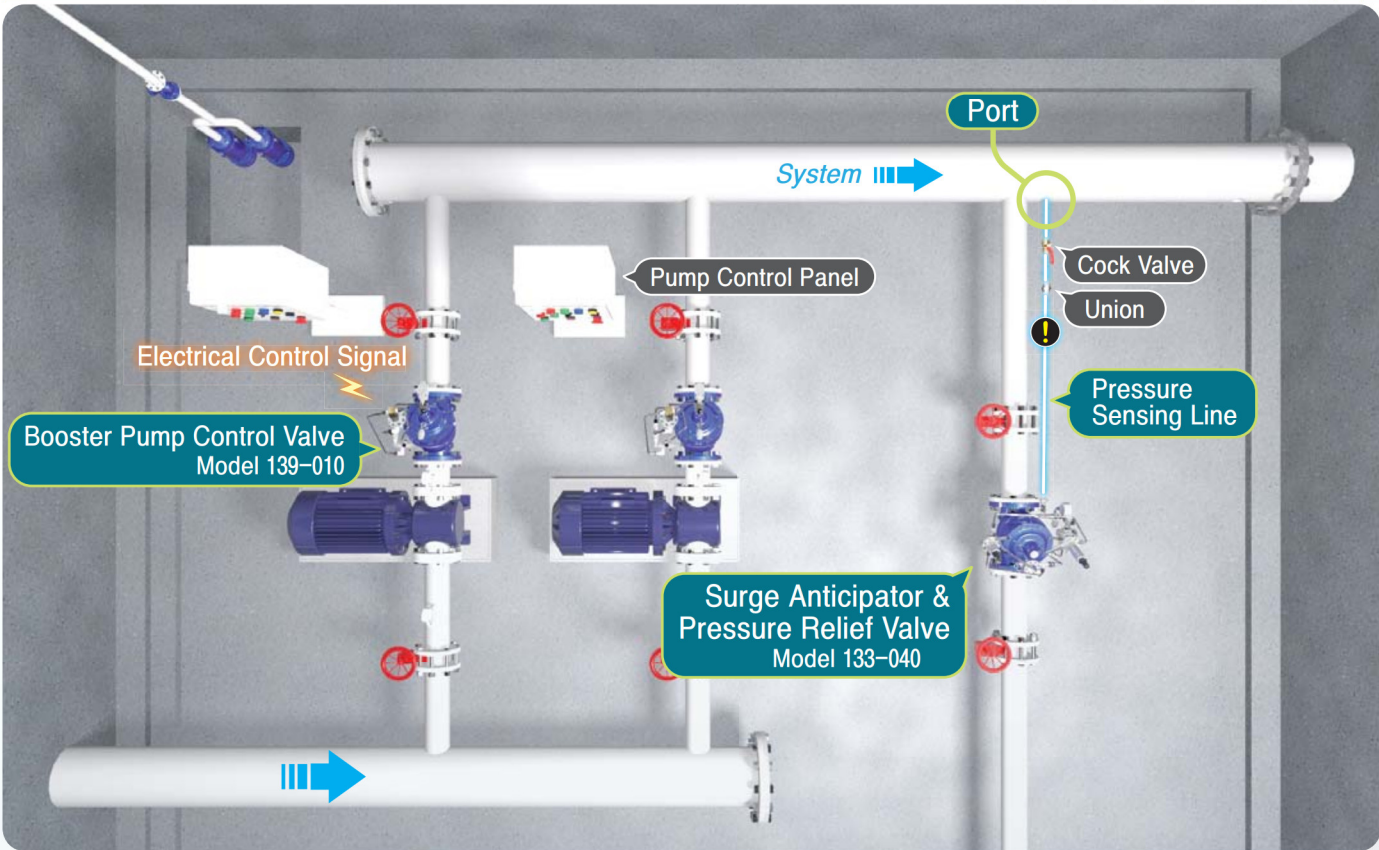
Size	Pattern	Operating Pressure	Media	End Connection
50A~300A	Up-right Globe Type	10, 16, 20, 25kgf/cm ²	Water, Oil Temperature : 0°C ~ 80°C	According to Customer Request
	Angle Type			
50A~1000A	Y-type Globe			

Typical Applications

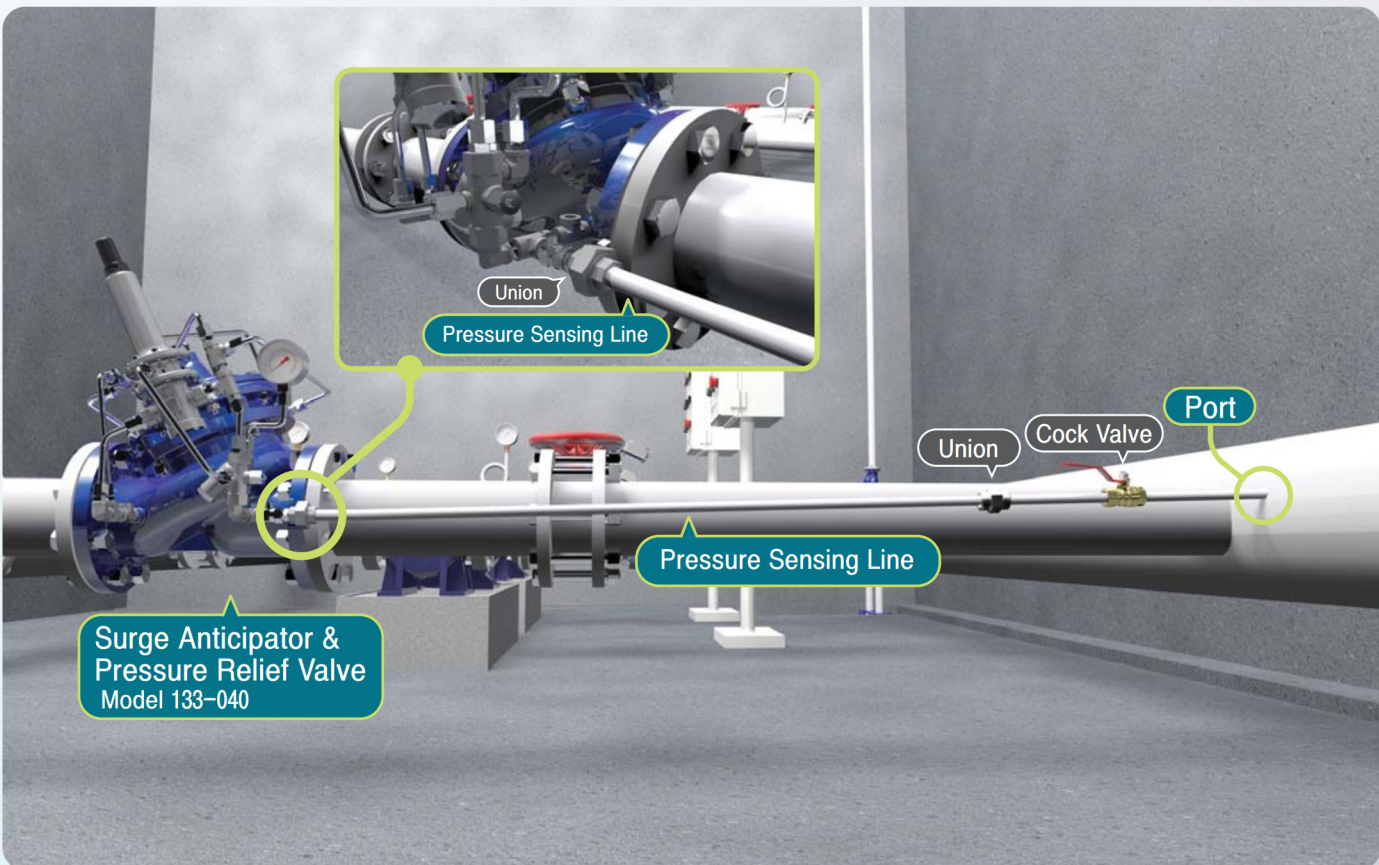


Technical data

Installation Guide (Surge Anticipator & Pressure Relief Valve)



- ⦿ Connect to port of header pipe line to 3/8" Union of Surge Anticipator & Pressure Relief Valve. Must install the cock valve on sensing line.



- ⦿ Please, Make the port on side of header pipe line.
- ⦿ Please, Install the Union on Surge Anticipator & Pressure Relief Valve Lower than port on header pipe line lest to exist the residual air in side the sensing line.

Installation Guide (Surge Anticipator & Pressure Relief Valve)